

# Secure Browser

## Overview

**Secure Browser** is a fraud prevention solution, offering secure site access with consistent user and device authentication. Secure Browser is not susceptible to malware attacks, it prevents misdirection of users to false sites, and it reduces risks by avoiding sites with malware. Secure Browser eliminates hard tokens or 3rd party security products. The link to download Secure Browser is on the **Commercial Online Banking (COB)** sign-on page. Additionally, the link can be located by signing into COB, navigating to **My Settings**, selecting **Secure Browser**, followed by **Click Here to Download Secure Browser**.

## System Requirements

**Secure Browser** is supported on both 32-bit and 64-bit versions of Windows 7, 8, 8.1, and most editions (Home, Professional, Enterprise) of Windows 10 for Intel-compatible platforms. Each version has a separate CCS installer.

Minimum system requirements are:

### Windows 7

- 1 GHz or faster SSE2 capable (Intel® Pentium® 4 or later)
- 2GB of RAM
- 16 GB (32bit) or 20 GB (64bit) of Hard Drive space (minimum)

### Windows 8, 8.1, and 10

- 1 GHz or faster SSE2 capable (Intel® Pentium® 4 or later)
- 2GB of RAM (for 32bit) or 4GB of RAM (for 64bit)
- 16 GB (for 32bit) or 20 GB (for 64bit) of hard disk space

## Keyboard Compatibility

- Computers must have a Personal System/2 (PS/2) style or USB Human Interface Device (HID) keyboard installed.

### Secure Browser — Getting Started

Secure Browser is a Chromium based product but can be used on any browser. The download takes 3–5 minutes on average. When it starts downloading, a blue circle or a green bar will appear across the top of the browser icon. Select the **Secure Browser** hyperlink found on the COB landing page or use the download link under the user profile. The user will be directed to the Secure Browser Set Up Wizard.

#### Before getting started ensure the following:

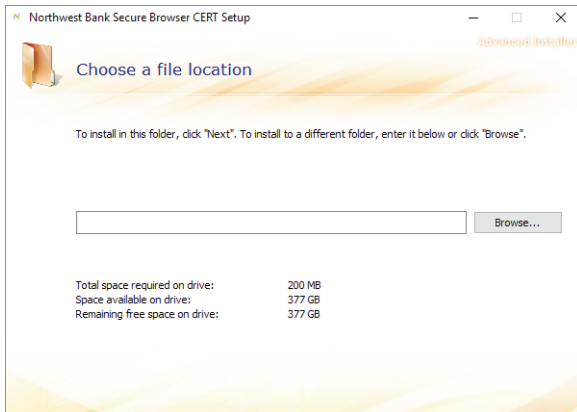
1. Internet connection
2. Administrative privileges on the computer where Secure Browser will be installed in order to install the Encrypted Keyboard Driver (EKD) prerequisite
3. Software Activation Key (SAK)
4. All open computer applications are **closed**
5. Works best if anti-virus software is temporarily disabled

## Installation & Registration Process

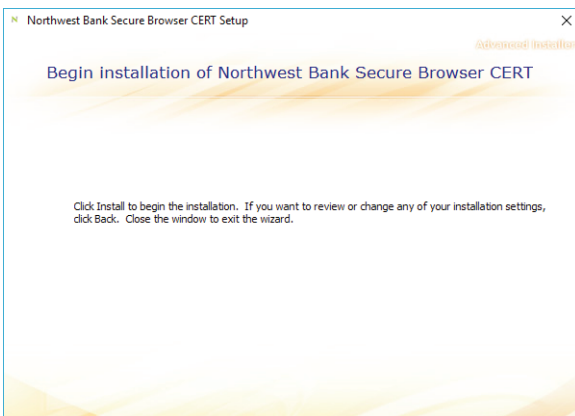


### Secure Browser — Installation

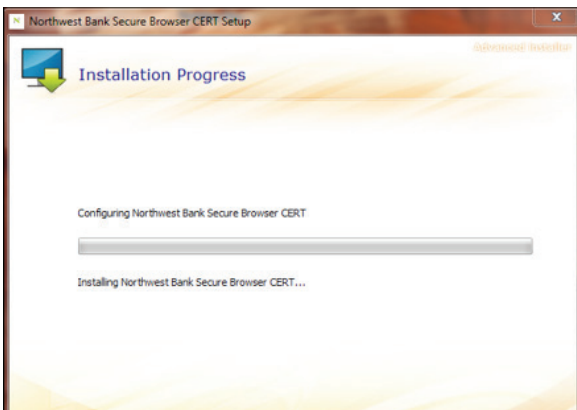
Select the **Secure Browser** hyperlink found on the COB landing page or use the download link under the user profile. You will be directed to the **Secure Browser Set Up Wizard**.



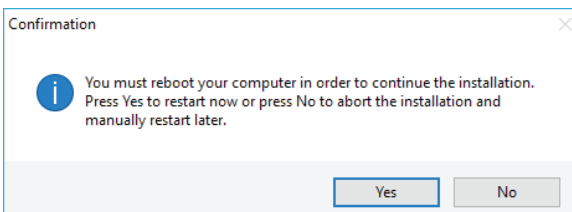
Now, select a file location. You can continue and use the defaulted location simply by selecting **Next** to continue.



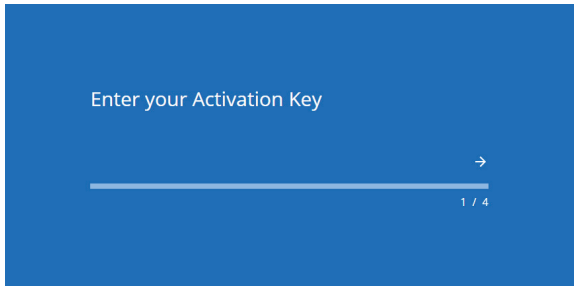
You will be directed to the installation page. Select the **Install** button to begin installing Secure Browser.



Installation begins and displays a progress bar as files and folders are created or updated.

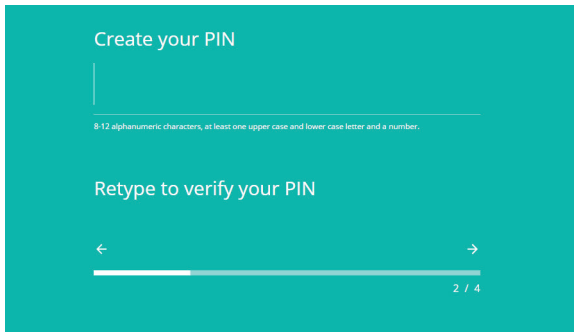


When installation has been completed, select **Finish**. A computer restart is required before beginning the registration process. Select **Yes** to have a reboot performed now and complete registration, or select **No** to perform the reboot and registration later. If prompted, confirm that Commercial Center Security should be allowed to make changes to the PC.

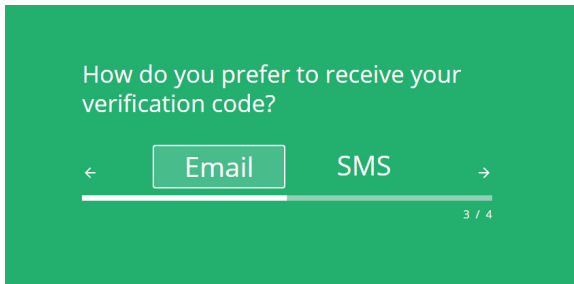


## Secure Browser — Registration

After performing the reboot, locate and click the **Commercial Center Security icon** that has been created on the desktop or from the **Windows Apps** tiles to begin registration. Enter the **Activation Key**, then select the **Continue** arrow.

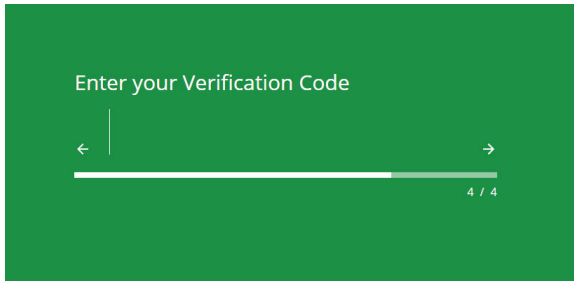


Create the **Personal Identification Number (PIN)** to be used to login. The PIN must consist of 8-12 alphanumeric characters, at least one upper case and lower case letter and a number. Re-Enter the **PIN** to ensure there were no keying errors. Select the **Continue** arrow.

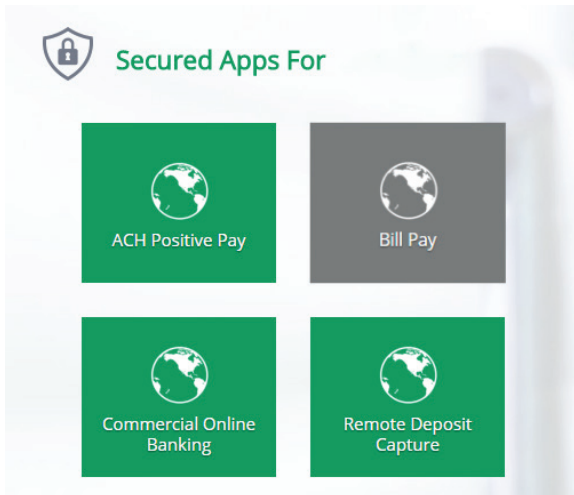


Select how to receive your verification code. Based on the selection, the code will be delivered to the email address or mobile phone number stored in your profile on Commercial Online Banking. SMS enrollment must be completed in Commercial Center Security in order to receive a code on a mobile device. If SMS enrollment has not been completed, it will not be listed as a selectable option and you must proceed with email.

## Secure Browser



Enter your 6-digit code, and then select the **Continue** arrow.



Enter the PIN created during Registration and select **Login** to securely access online banking. You will see the icons for the Secure Apps you have been permitted to.